

UpToDate®

Reference Guide for Providers

Introduction

Clinicians who log in to MyPractice have the ability to launch the UpToDate® clinical reference tool directly from their MyPractice account. Each time a clinician performs an UpToDate® article search from within MyPractice, they gain CME credits, which are automatically tracked. Additional benefits include:

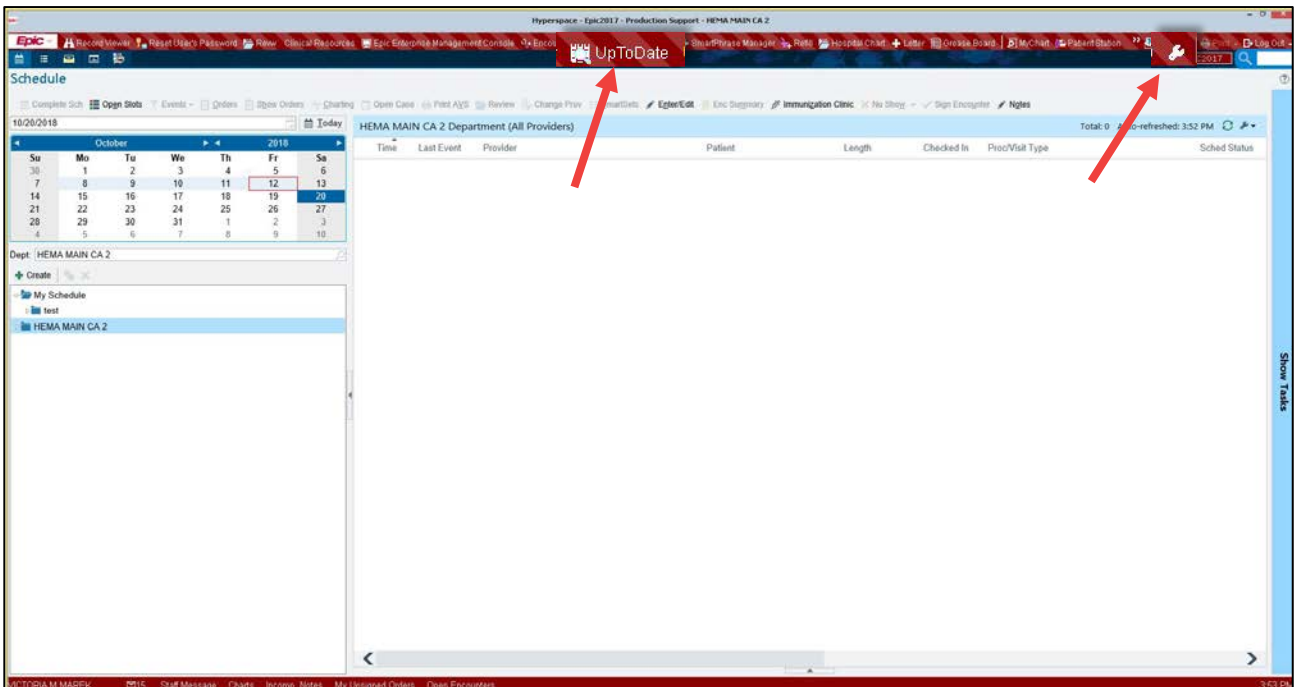
- Automatic login via MyPractice allows for easy CME accrual re-verification
- Mobile application
- Accessing UpToDate® from home, the office or anywhere there is an Internet connection

New UpToDate® users must register one time for an account. Registered UpToDate® users must log into MyPractice and follow the one time steps below to ensure seamless re-verification and easy CME accrual.

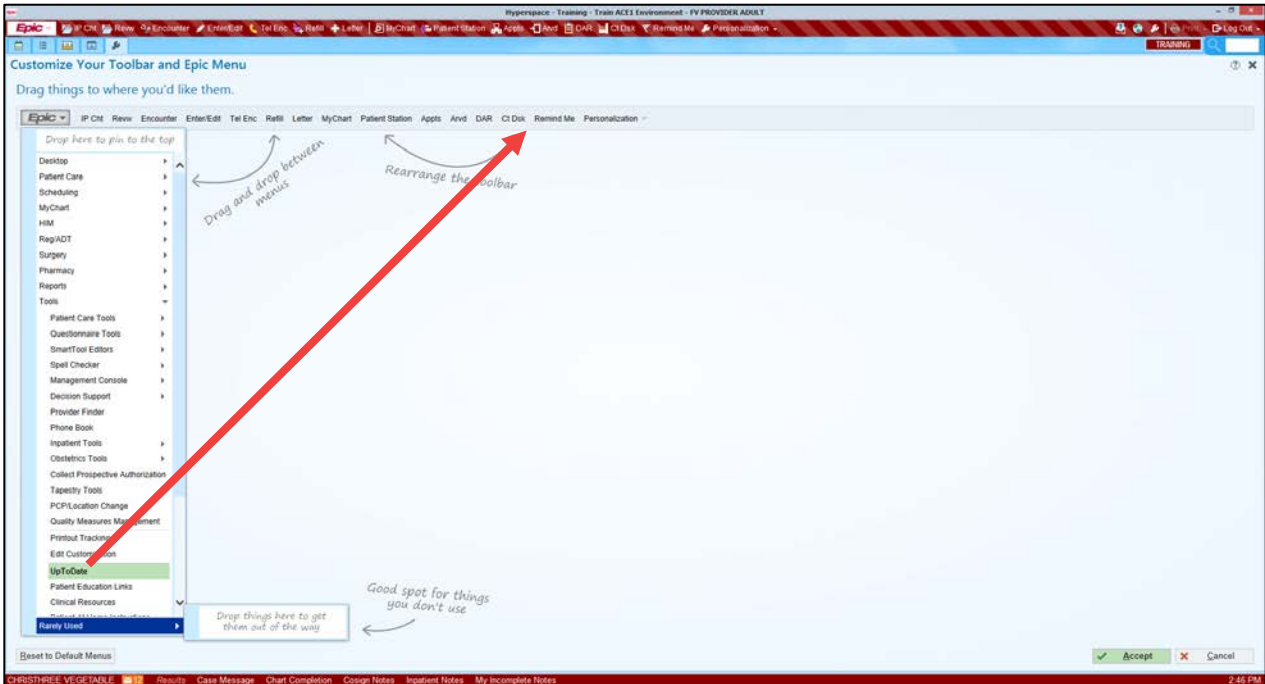
1. Click **UpToDate**.

OR

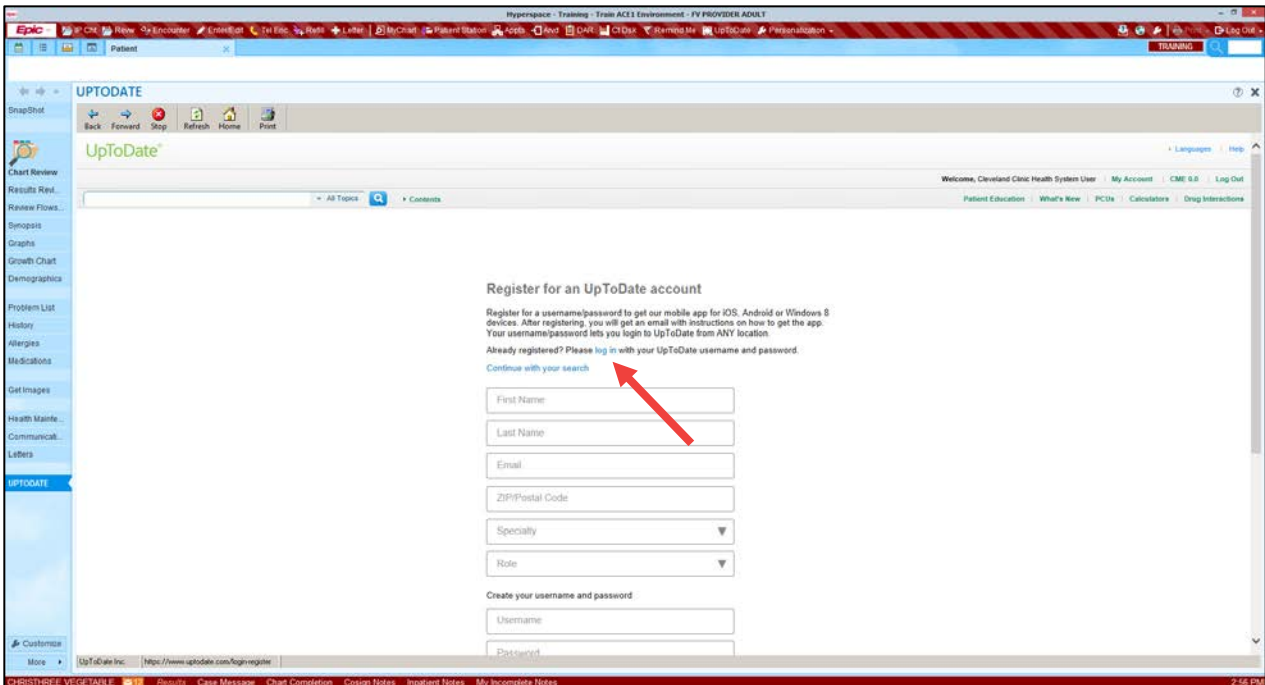
If you do not see UpToDate, click the **wrench**.



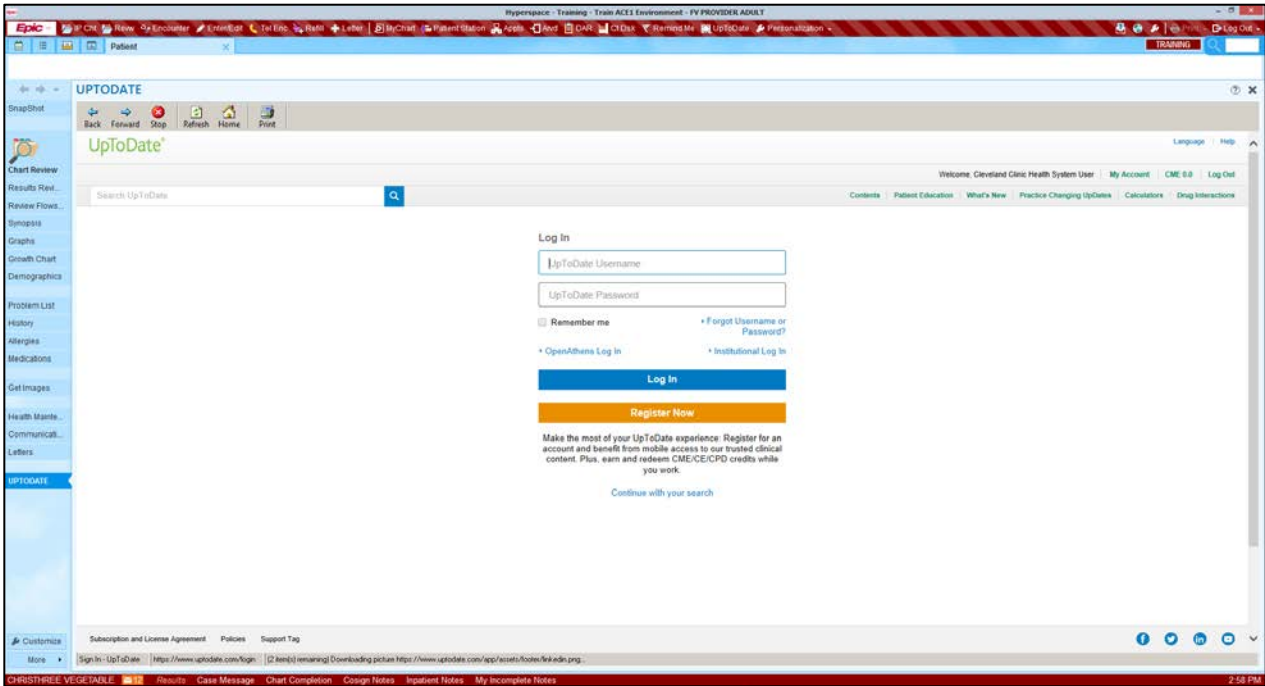
2. From the menu at the left, scroll to find UpToDate. Click **UpToDate**, drag and drop it to the menu.
3. Click **[Accept]**.



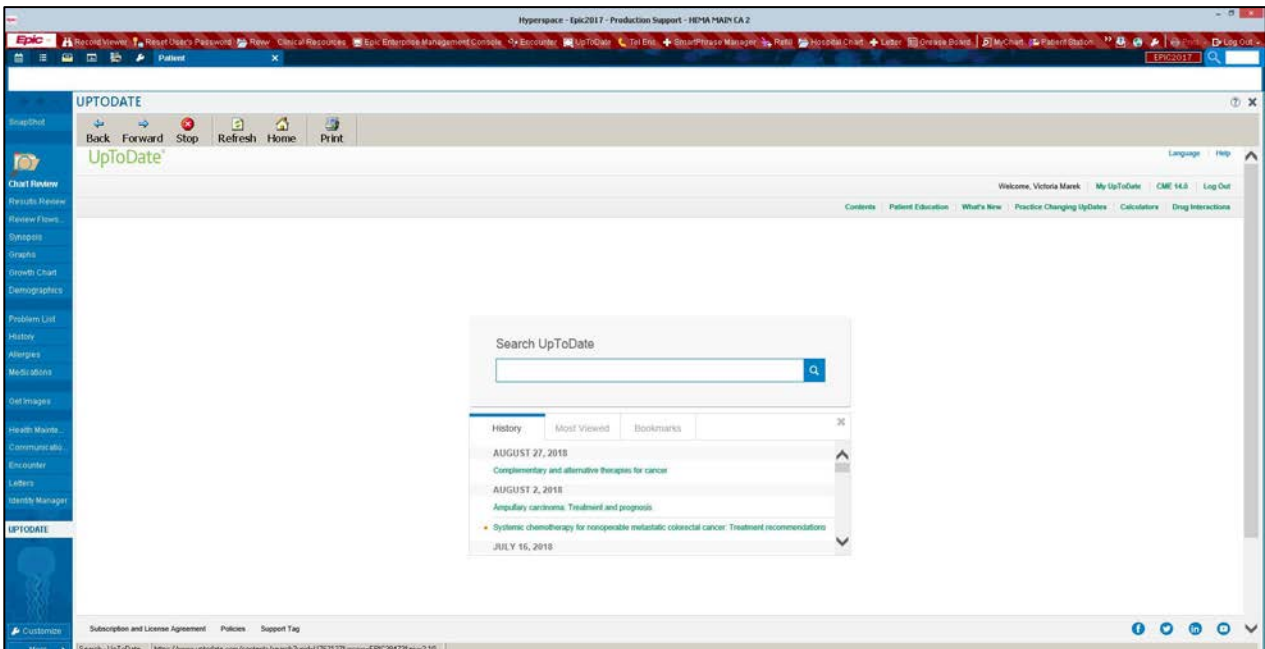
4. The UpToDate Registration screen appears. If you already have an account, do not re-register. Instead, click the **log in** hyperlink.



5. Enter your UpToDate **Username** and **Password** and click **[Log In]**. This merges your UpToDate account within MyPractice.



6. Your UpToDate account is now merged in MyPractice. Anytime you click UpToDate in MyPractice it automatically logs you into your established account allowing for easy CME accrual and re-verification. Click [here](#) to learn more about obtaining and submitting CME credits through UpToDate.



Take Note

If you have a question regarding the application or your account, contact UpToDate Customer Service at 1-800-998-6374 or email customerservice@uptodate.com.